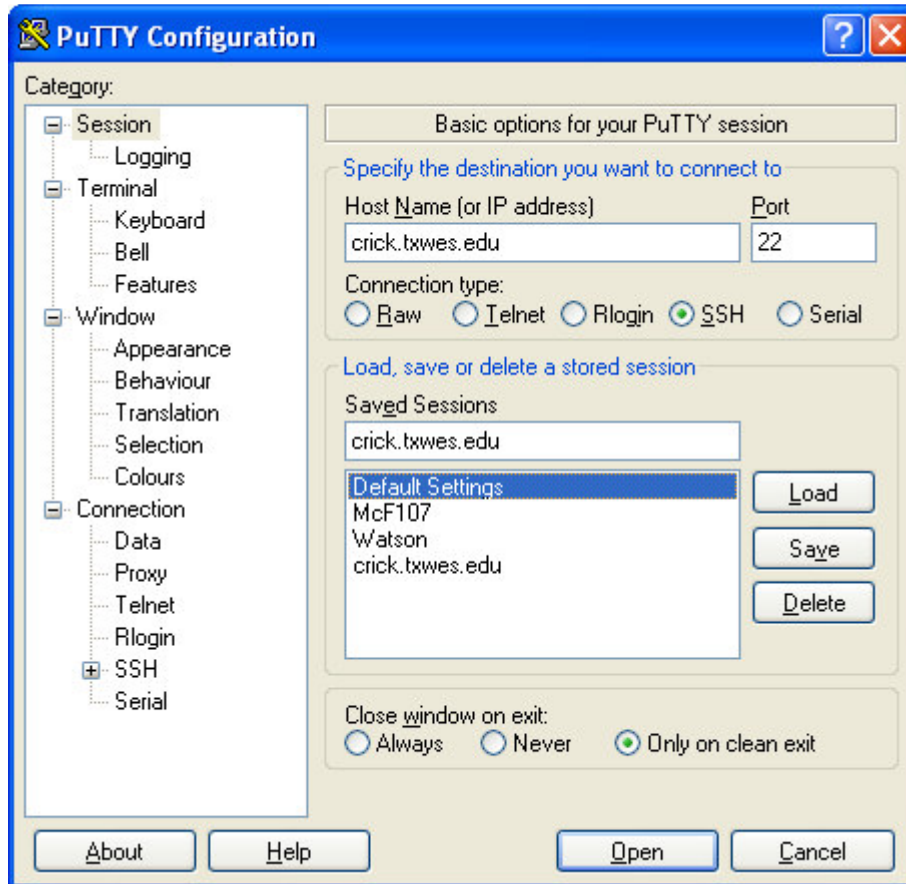


How to set up a web page on LINUX server (crick)

By Yukong Zhang

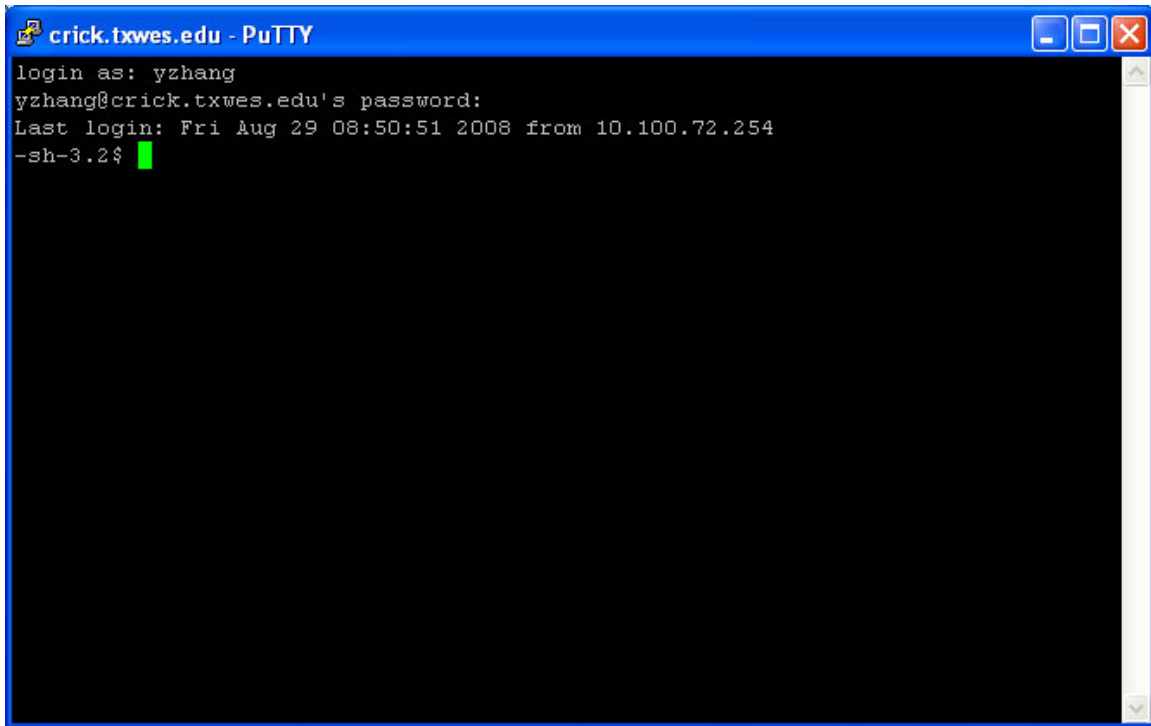
To set up a web page on crick server, log in the web server first.

► Start > All Programs > PuTTY > SSH



► Type the server name “crick.txwes.edu” in the box Host Name (or IP address) and click Open button to log in.

► Type your university login name under the prompt of “login as” and then hit enter key and then type password and hit enter key again. If you see a popup window comes up, push “Yes” button.



```
crick.txwes.edu - PuTTY
login as: yzhang
yzhang@crick.txwes.edu's password:
Last login: Fri Aug 29 08:50:51 2008 from 10.100.72.254
-sh-3.2$ █
```

- ▶ Create a directory called “public_html” for your web pages with the following command:

```
-sh-3.2$ mkdir public_html
```

A directory named public_html is created under your home directory (/home/yourusername) on the server machine. This directory will be used to store your web pages. The absolute path of this directory is /home/yourusername/public_html. The URL (web address) <http://crick.txwes.edu/~yourusername> is associated with (mapped to) this directory.

For example, if you have a web page named hello.html under public_html directory, you can view this web page with a web browser by typing URL: <http://crick.txwes.edu/~yourusername/hello.html> If you don't specify a html file name after .../~yourusername/ in the URL, the web server will look for index.html under public_html directory and send it back to your browser if it exists. So, it is typical to have a file named index.html in your website as a starting page. Other pages may be linked from there.

- ▶ Final step is to ask your instructor/administrator of the server to set proper permissions for your web folders so that your web pages can be viewed from outside.